



Create your Made-to-Order Tin Box with us

[English](#) [Japanese](#) [Contact](#)

[What's Tin Box?](#)

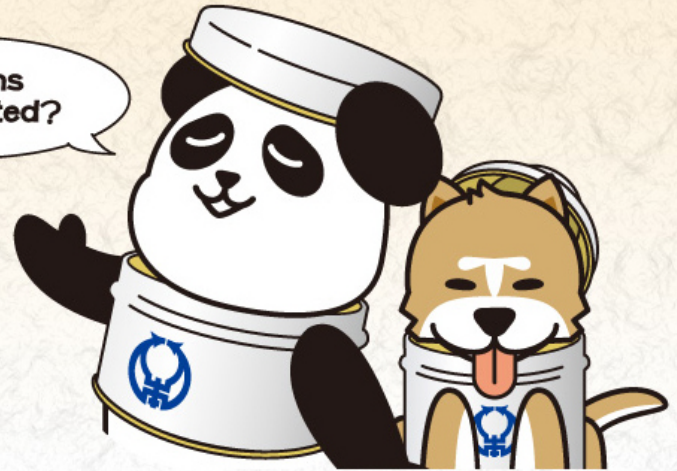
[Services](#)

[KINPODO Showroom](#)

[About Us](#)

SUPERIOR TIN

Why Tins
are selected?



©KINPODO CanCan

100 Years of Manufacturing Tin Boxes

KINPODO is a manufacturer mainly of made-to-order Tin Boxes, for such as cookies, tea, coffee, or pencils... available in various use. Our long-years of techniques will absolutely meet your requirements. Tins excel in dampproofness, printability and recyclability. Why not try eco-friendly Tins as a container of your products?



Site Search

[INQUIRY](#) | [PRIVACY POLICY](#) | [SITEMAP](#) |

Copyright (c) 2014 KINPODO Matsumoto Industry Co., Ltd.



SUPERIOR TIN

Why Choose Tins?

We highly recommend Tin Box as a container because of its...



SEALING PERFORMANCE & DAMPPROOFNESS

Tins do not allow air or water to come in, and prevent drying.



OPACITY

Tins never allow sunlight to come in, which prevent contents inside from getting spoiled.



SHOCK RESISTENCE

Tins protect contents inside from various impacts.



WATERPROOFNESS & HEATPROOFNESS

Steel-made Tins are strong to the heat, sunlight or water.



SUITABILITY FOR HAZARDOUS MATERIALS

Tins enable flammable materials such as thinner or oil to preserve safely.



PRINTABILITY

Surface of Tins reflects printing inks finely, and enhances the value of products.



RECYCLABILITY

Tins are quite easy-recycled. Collected Tins are 100% recycled, and change into new containers.



ECO-FRIENDLY TIN

Containers and Packing Recycling Law

What is Containers and Packing Recycling Law?

Containers and Packing Recycling Law is a law to reduce general waste, and recycle containers since approximately 60% of household waste consists of containers.

BUT

Steel Tins are excluded from Containers and Packing Recycling Law.

BECAUSE OF...

① High Recycling Rate

Marked **90.4%** of recycling rate in 2011.

(Published by Japan Steel Can Recycling Association)

Reaching the record high for third consecutive year.

② No Recycling Cost

No need to levy tax or fee
due to the steel's original recycling route.

What's More

**Steel is magnetically sortable
and excel in recyclability.**



KINPODO's TIN

Experience, Techniques, Know-How.. All for Customers

Thank you very much for your interest in our service. We, KINPODO has been creating various package containers with the use for more than 100 years.

Our made-to-order packages with skillful techniques and experience have good reputations from customers, and will absolutely meet your requirements. Please feel free to contact us.

Work Flow

Our general work flow is described as follows.

1 INQUIRY

Please feel free to contact us by email.

2 ARRANGEMENT

We ask you about your requirements in order to offer you an ideal product.

Visit Our Showroom

Please come and see our **showroom** with approximately 5,000 kinds of Tins for your reference.

Submission of Sample Tin Box

We propose you several sample Tin Box in accordance with your requirement.

3 QUOTATION

We quote a price depending on the lot, specification (materials, printing, or package) or delivery destination. Please note that it will take several days for the quotation.

4 DESIGN

If you have trouble with the design, our designers are delighted to offer you total support for it. Design proposal will be by any of printed output paper, CG image or paper pasted dummy based on your request.



KINPODO's TIN



5 PRINTING

Please place an order of product with the final specification.
Then the design data will be sent to print.



6 PROOFREAD

Designated design will be made plates for printing and proofread.
Then please check the proofread Tin Box.



7 MANUFACTURE

(Material Arrangement/Printing/Processing)

Tins are manufactured carefully one by one with our great quality control.



8 DELIVERY

Our drivers deliver your manufactured Tins to designated FOB port with minute attention not to damage the products.



TIN COLLECTIONS

Shape CG Images

Tins below are sample images of the shape. All productions are by order, and abundant metal molds (Approx. 700 types) are available besides Tins below.

[Click here for more details on the size.](#)

Tea Tins



Other shapes can be proposed except for the basic Tea Tins above.

Bucket Tins



*With or without toe of bead
*With or without cushion lid
*Diameter and height can be adjustable

Other Deformed Tins



Heart Tins, Flower Tins, Clover Tins, Wave Tins, Triangular Tins, or Deformed Octagonal Tins... Other deformed shapes are also available.

Round Tins



Basic round Tins.
*With or without toe of bead
*Height can be adjustable
*Tubular type is also available

Oval Tins



*With or without stack lid
*Height can be adjustable

Laver Tins



Plenty sizes are available.
Inside lids can be proposed.



TIN COLLECTIONS

Angular Tins



Basic Angular Tins.

- * With or without stack lid
- * With or without toe of bead
- * Height can be adjustable

Bent Tins



A method of bend-forming manufacture have been receiving good reviews.

For Various Use



Abundant sizes from small portable Tins are available. Hinged lids can be proposed.

CHURN



Motif of Tins for farm milk collection.

※Various types are available besides above images such as badges, trays, cigarettes case, sliding case, or card case.

- Toe of bead: holds the lid, and enhances the strength of the body.
- Stack: a lid with roughness prevents from slipping when piling up Tins.



SHOWROOM

KINPODO'S Showroom

※Our showroom is available only in case of the bargain.

Please contact our Sales Department in advance.



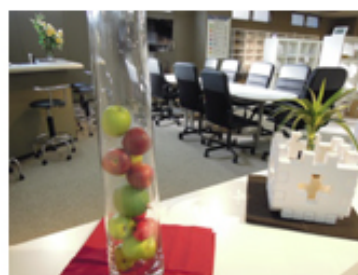
Large variety of Tins are on display by forms at our showroom in Tokyo Head Office.

Please come and see our showroom for your reference. Our designers will support your design.

Proposal Section

Your ideas will come up to your mind easily with the atmosphere of the room.

Please relax and utilize the space for your creation.

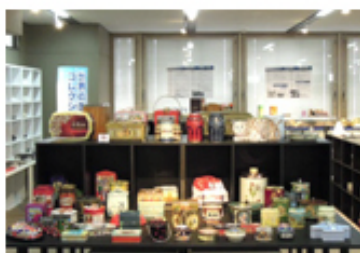


History Section

Old handmade Tins can be learnt with the timeline table in this section. You will see Tin's excellence from the aspect of past.

Materials/ Process/ Printing/ Recycle

The process of Tin manufacturing can be seen in this section. We will explain about wooden models, styrene foam made dummy, kinds of Tins, printing methods, embossed or recycle process.



Overseas Collection

Invaluable Tins from all over the world are brought to this section.



COMPANY GUIDE

Greeting

Thank you very much for your visit to our website. We are a manufacturer of made-to-order Tins.

Even if you are not familiar with the name of it, you will often find them for such as sweets, laver or tea. Life connected Tin Boxes are user-friendly, have superior dampproofness, shock resistance, recyclability and printability... Tin Boxes have marvelous fascinations.

We absolutely contribute to your sales promotion with the offer of our superior packages.



Tokyo Head Office

Shin-Okachimachi KM Bldg. 1-28-12 Higashi-Ueno, Taito-ku, Tokyo 110-8630 Japan
(1F: Sales Department/Planning Section · 4F: Accounting/General Affairs/Overseas Department)

● Access to Tokyo Head Office We look forward to your visit.



[View in GoogleMaps](#)

- 1 minute's walk from A1 Exit of Shin-Okachimachi Station (Oedo Line or Tsukuba Express Line).
- 5 minutes' walk from aboveground intersection of Inari-cho Station (Ginza Line).
- 3 minutes' walk from Exit 3 of Naka-Okachimachi Station (Hibiya Line).
- 10 minutes' walk from North Exit of JR Okachimachi Station.

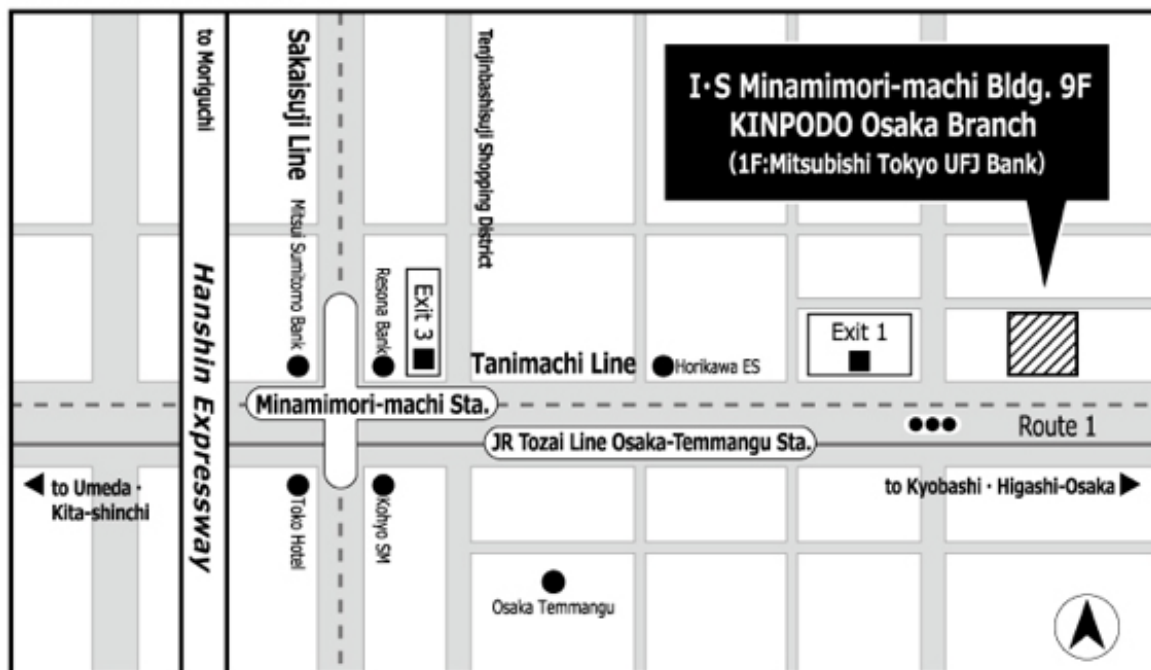


COMPANY GUIDE

Osaka Branch

I-S Minamimori-machi Bldg. 9F 2-6-5 Higashi-Temma, Kita-ku, Osaka-shi, Osaka 530-0044

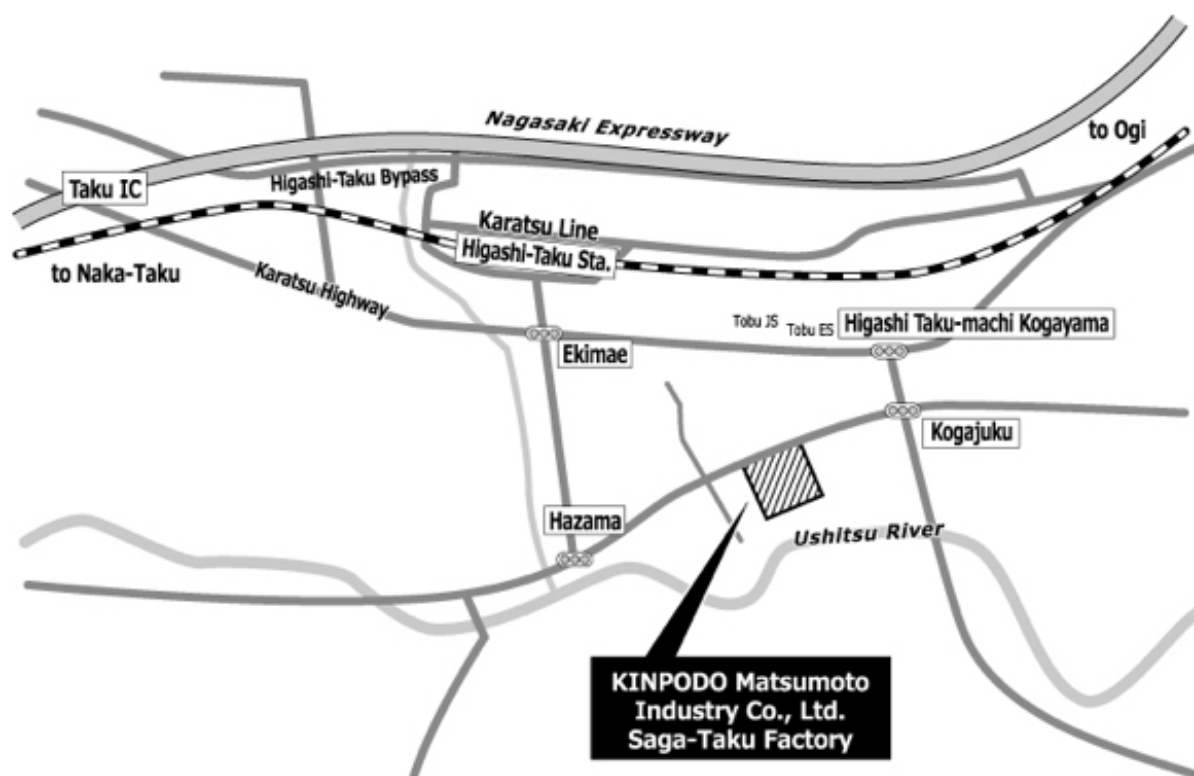
Access to Osaka Branch



- 1 minute's walk from JR Exit 1 of Osaka-Temmangu Station (JR Tozai Line).
- 3 minutes' walk from Exit 3 of Minamimori-machi Station (Tanimachi Line or Sakaisuji Line).

Kyushu Office

1461-1 Befu, Higashitaku-machi, Taku-shi, Saga 846-0012





COMPANY PROFILE

Company Name	KINPODO MATSUMOTO INDUSTRY CO., LTD.
Address	Tokyo Head Office Shin-Okachimachi KM Bldg. 1-28-12 Higashi-Ueno, Taito-ku, Tokyo 110-8630 Japan -> AccessMap Osaka Branch I-S Minamimori-machi Bldg. 9F 2-6-5 Higashi-Temma, Kita-ku, Osaka-shi, Osaka 530-0044 Kyushu Office 1461-1 Befu, Higashitaku-machi, Taku-shi, Saga 846-0012
Representative	President Masao Takeuchi
TEL	Overseas Department +81 3 3831 1199
Establishment	May, 1905
Capital	100,000,000JPY
Description of Business	Metal Container Manufacturer
Number of Employees	131
Factories	Angyo Factory/ Shiga Factory/ Saga-Taku Factory
Associated Companies	Matsumoto Industry Co., Ltd. / Matsumoto Estate Co., Ltd. / Shinden Engineering Co., Ltd. / KINPODO Transport Co., Ltd. / KINPODO Print Industry Co., Ltd.





COMPANY PROFILE

History

- 1905 Itaro Matsumoto founded KINPODO Matsumoto Tin Manufacturing Factory in Shitaya-ku, Nishi-cho, at present Head Office site
- 1939 Rename to KINPODO Matsumoto Industry Co., Ltd.
- 1941 Productions of Tins of ship's biscuits or cannonballs due to the designation of war factory
- 1943 Establishment of high order factory (Subsequently Kawagoe Factory) in Saitama Prefecture
- 1945 Introduced "Paper + Asphalt Tins"
- 1954 Ichiro Matsumoto took office as the second president.
Itaro Matsumoto took office as the chairman
- 1955 Construction of Kawaguchi Factory in Saitama Prefecture (Relocation from Kawagoe)
- 1956 Designation factory of Japanese Industrial Standards (JIS)
- 1961 Patent application for Fumigated Tins
- 1963 Establishment of KINPODO Factory cooperative
- 1965 Establishment of KINPODO Print Industry Co., Ltd.
Completion of Tokyo Head Office
- 1966 Winning the chamber of commerce prize at the 17th Exports Packing Exhibition
- 1967 Winning the academy prize in praise of industrial contribution by International American Studies Association
Establishment of Hasuda Factory (Subsequently Daiichi Seikan Co., Ltd.)
- 1969 Establishment of Osaka Branch in Takatsuki, Osaka
Installation of Collection and Delivery Centre in Angyo, Kawaguchi, Saitama Prefecture
Establishment of Soka Factory in Soka, Saitama Prefecture
- 1971 Relocation of Osaka Branch to Kita-ku, Osaka
- 1973 Shiga Factory begins operation
Acquisition of patent on Bent Tin Manufacturing
- 1981 Exhibition of Tokyo Harumi Packing Show
- 1984 Joint Exhibition of Tokyo Sweets Expo
- 1985 Reconstruction of Tokyo Head Office
- 1987 Establishment of KINPODO Transport Co., Ltd.
- 1988 New-model Shield Tin was produced



COMPANY PROFILE

- 1993 Construction of the second factory in Angyo, Saitama
- 1995 Takuzo Matsumoto took office as the third president.
Ichiro Matsumoto took office as the chairman
- 2001 Acquisition of ISO 9001 certificate
- 2005 KINPODO celebrates 100th anniversary
KINPODO website was opened
- 2009 Masao Takeuchi took office as the fourth president.
Naoko Matsumoto took office as the chairman
- 2014 Construction of Saga-Taku Factory in Taku, Saga
Establishment of Kyushu Office
Construction of the second warehouse in Angyo, Kawaguchi
Establishment of Overseas Department

Our Business Partners

Department stores, gifts, sweets, medicine, stationaries, general merchandise, fancy goods, clothing, cosmetics..

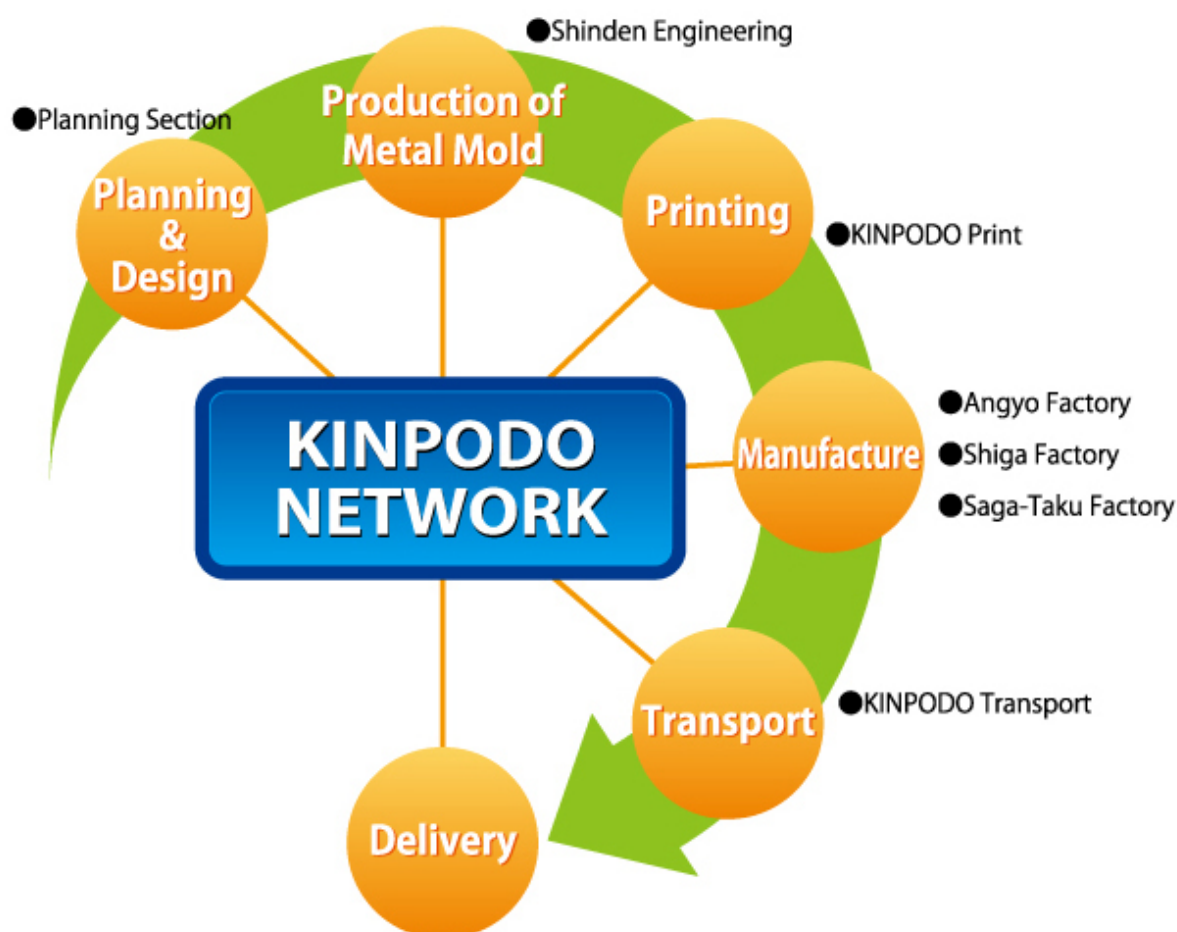
We have wide dealings with various companies.



PRODUCTION SYSTEM

KINPODO Networks

In domestic transactions, KINPODO performs all manufacturing processes including design, printing and delivery in our group companies, which enables us to avoid waste, and supply high-quality products to customers. We keep the confidentiality of products, and improve the precision and efficiency of made-to-order Tin manufacturing throughout this network.





PRODUCTION SYSTEM

Production System

Shinden Engineering

All manufacturing methods including the production of metal molds are developed at Shinden Engineering.

KINPODO Print

Tin plates are printed at KINPODO Print.

Your information are kept confidential through the in-house printing.



Angyo Factory/ Shiga Factory/ Saga-Taku Factory

Manufacturing lines are different depending on the shape.

With plenty lines, we are able to manufacture various types of Tins.



1 Shiga Factory 2 Saga-Taku Factory 3 Angyo Factory

KINPODO Transport

In domestic transactions, Our drivers deliver your manufactured Tins with minute attention not to damage the products.

(National Delivery Only)



ISO9001

Efforts towards ISO9001

KINPODO acquired ISO9001 certificate in May, 2001, which is one of International quality management system standards.

We will dedicate to increasing the quality in order to fulfill your satisfaction.





FAQ

We picked up some frequent asked questions.

Q. Is it possible to get a quotation right now?

A. Unlike paper printing, it will take several days for the quotation since Tins require calculations of materials.

Q. Which application should we use for submitting data?

A. Please submit by Adobe Illustrator or Photoshop. The version of Illustrator is applicable up to CS5 from 8.0.



©KINPODO Cancan

Quotation

Q. Is it okay to create data with CMYK colors?

A. Yes. However, please note that the price will not be colors of four. Tins require white ink on the basis, finishing varnish at the end, and wider surface requires more colors.

Q. I want plain Tin Boxes in stock.

We are afraid, but we cannot since we are a made-to-order manufacturer.



©KINPODO Cancan

Four-color data is applicable

Q. Is it possible to calibrate colors at the stage of Tins?

A. Yes. You can compare both printed tin plates and manufactured Tins.

Q. Are we asked for the payment of metal mold?

A. You can choose from our existing metal molds. However, if you cannot find a desirable model, you may create a new mold which will require you an enormous cost.



©KINPODO Cancan

Happy to calibrate!